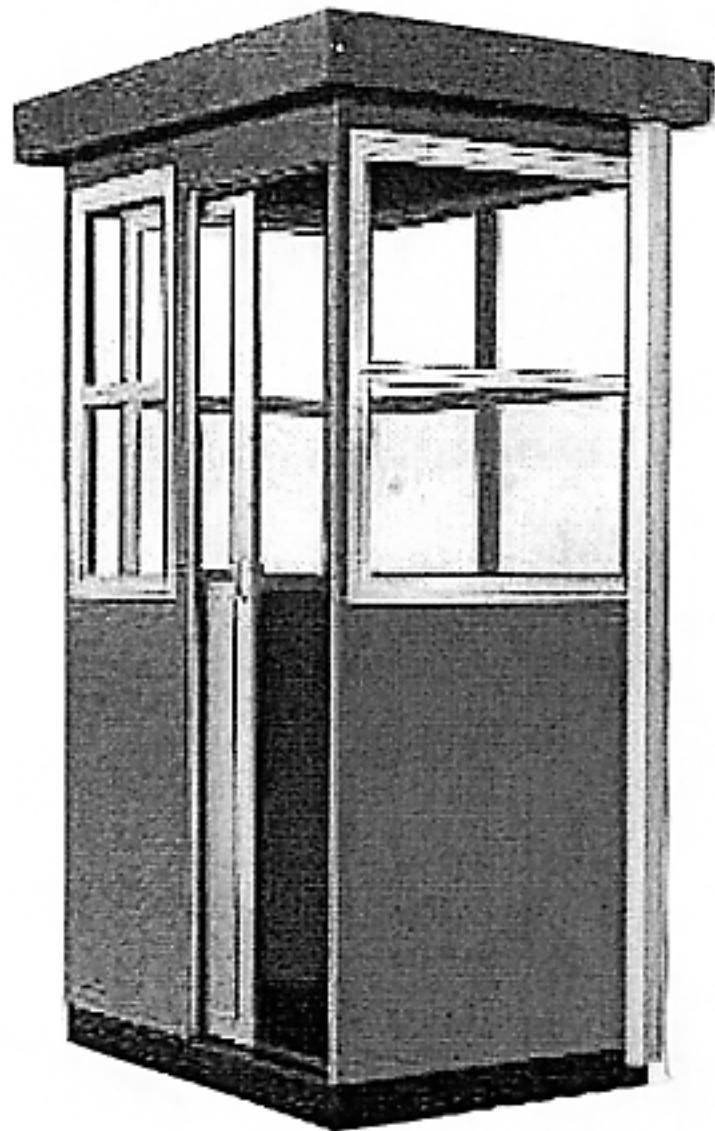
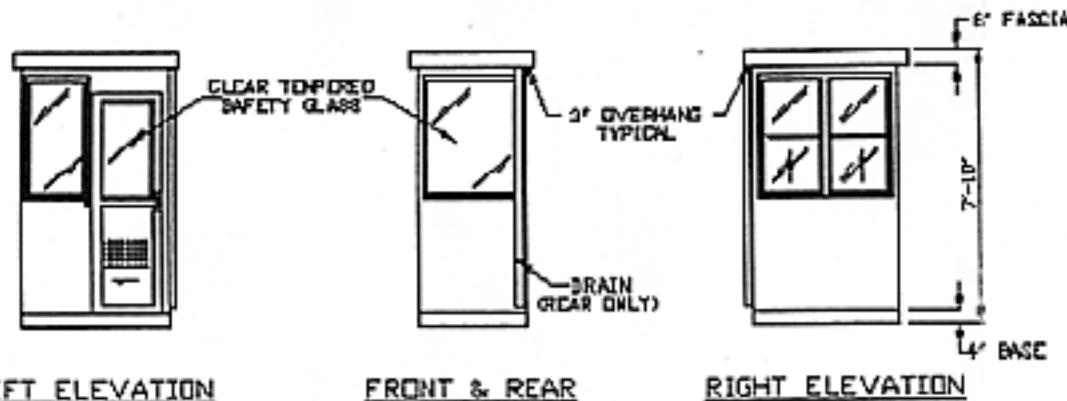


PLAN VIEW  
(N.T.S.)

STANDARD ITEMS FOR A PC-44SL STEEL BUILDING

- ① — 100 AMP LOAD CENTER
- ② — 115V DUPLEX, 230V OUTLET
- ③ — 40 WATT LIGHT FIXTURE
- ④ — 22" DEEP SHELF
- ⑤ — 3" OVERHANG EXTERIOR ROOF (OPTIONAL)  
(REFER TO DUPASTEEL SPECIFICATIONS  
FOR TYPICAL CONSTRUCTION)

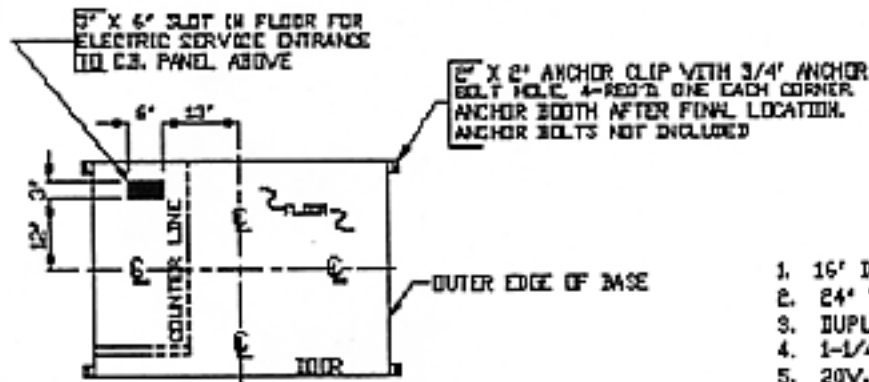




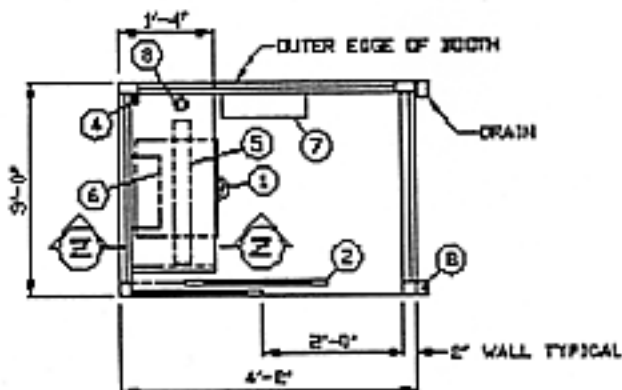
LEFT ELEVATION

FRONT & REAR

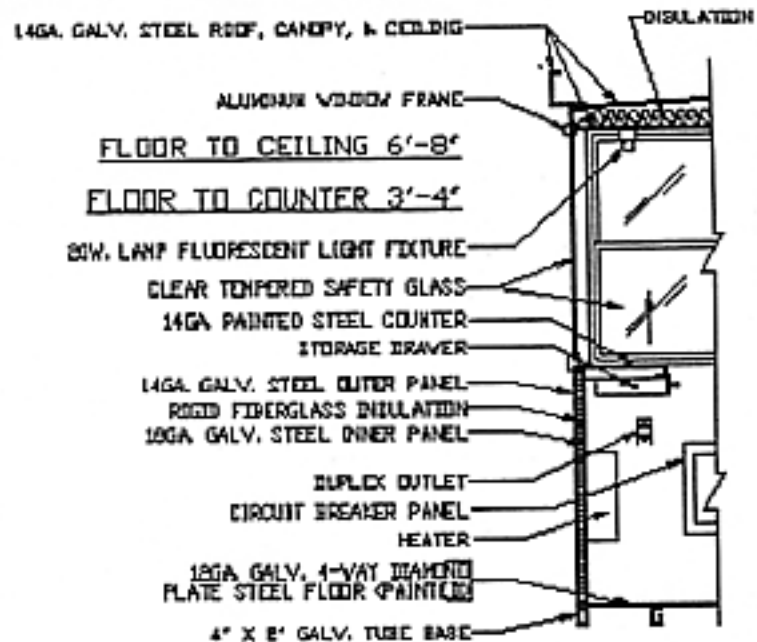
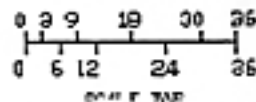
RIGHT ELEVATION



SERVICE ENTRANCE/ANCHOR BOLT LAYOUT



PLAN VIEW



SECTION ZZ  
NO SCALE

1. 16" DEEP STEEL COUNTER WITH STORAGE DRAWER BENEATH
2. 24" WIDE SLIDING ALUMINUM DOOR WITH LOCK
3. DUPLEX OUTLET.
4. 1-1/4" HOLE IN COUNTER.
5. 20V. FLUORESCENT LIGHT WITH SWITCH AND LAMP.
6. FAN FORCED HEATER
7. CIRCUIT BREAKER PANEL MAIN BREAKER INCLUDED
8. 2" X 2" ANCHOR CLIP, 4-REQ'D, ONE EACH CORNER. ANCHOR BOLTS NOT INCLUDED.

PARK is brought to you by Deborah Stratan and Temporary Services

**NOTE:** PAR-KUT BOOTHS ARE OF SINGLE UNIT WELDED GALVANIZED STEEL CONSTRUCTION, FACTORY ASSEMBLED AND DELIVERED SET UP. BOOTHS ARE GLAZED, INSULATED, WIRED, AND FINISH PAINTED ONE COLOR OF CHOICE. (FROM PAR-KUT STANDARDS) FAILURE TO SECURELY ANCHOR BOOTH MAY RESULT IN OVERTURNING OF UNIT AND SERIOUS INJURY TO OCCUPANT.

FOR MORE INFORMATION:  
TEMPORARY SERVICES  
202 S. STATE STREET  
SUITE 1124  
CHICAGO, IL 60604

PYTHAGORAS@AUSGANG.COM

A/C NOTES

PANIT COLOR:

WWW.MEGSINET.NET/~NOBUDGET/TEMP\_SERV.HTML

# PARK

MISS

RETTAN

5.  
V.  
S.

TTT DAY

Q.  
S.

000

- photo 13 SW corner, Monroe & Clinton, 100 S. Clinton  
130 S. Clinton, b/w Adams & Monroe on W side  
N side Adams b/w Jefferson & Clinton  
SW corner, Jackson & Jefferson  
NE corner, Jefferson & Van Buren
- photo 12 Songs Parking Co. 312 362 1449  
W side Clinton b/w Jackson & Van Buren
- photo 5 Standard Parking 312 696 4000  
SW corner, Grand & Kingsbury  
photo 8 440 W. Lake St., near Canal & Fulton  
photo 9 SW corner, Lake & Jefferson  
Jefferson b/w Washington & Madison  
N side Van Buren b/w Franklin & Wacker  
photo 14 SE corner, Adams & DesPlaines  
W side Dearborn b/w Congress & Lake
- System Parking 312 819 5050  
NE corner, Adams & DesPlaines  
SE corner, Adams & DesPlaines  
SE corner, Clark & Harrison  
S side Harrison, b/w Wells & Financial Plaza
- Valet Chicago  
W side Wabash, b/w 11th & 12th
- Whitman-Hart Parking  
1222 W. Lake Street
- photo 3 Unknown Ownership  
photo 4 13 W. Illinois, S side  
N side Grand, b/w Wells & Franklin  
SW corner, Kinzie & Jefferson  
NE corner, May & Washington  
SW corner, Carpenter & Washington  
photo 22 NE corner, Washington & DesPlaines  
photo 15 E side Halsted b/w Washington & Madison  
NW corner, Madison & DesPlaines  
SW corner, DesPlaines b/w Madison & Monroe  
NE corner, Madison & Aberdeen  
SW corner, Monroe & Jefferson  
NW corner, Monroe & Franklin  
NE corner, Adams & Halsted  
SE corner, Adams & Halsted  
E side Halsted b/w Adams & Jackson  
photo 16 side street E of Halsted b/w Jackson & Van Buren  
S side Harrison b/w Clinton & Jefferson  
NE corner, Harrison & Wabash  
610 S. Wabash, SW corner, Harrison & Wabash  
SW corner, Jefferson & Taylor  
410 S Wabash, b/w Congress & VanBuren  
435 S Wabash, b/w Congress & VanBuren  
photo 17 E side Clinton under Congress  
W side Clinton under Congress  
E side Clinton b/w Congress & Harrison  
NE corner, Harrison & State  
520 S. State, NW corner, Harrison & State  
Clinton at Taylor  
photo 20 NW corner, Clinton & Lexington  
photo 18 400 W. Polk, where Polk dead ends into Post office  
E side Clark b/w Polk & Harrison  
S side Harrison b/w Dearborn & Plymouth  
W side Wabash b/w Balbo & 8th  
SW corner, Michigan & 14th  
W side Michigan, b/w 13th & 14th  
W side Michigan, b/w 13th & Roosevelt  
708 S. State, NW corner, Polk & State  
E side State, b/w 5th & 9th  
E side State, b/w 13th & Roosevelt  
E side State, b/w 14th & 15th (3 booths)

## ARCHITECTURE AS FRAUD

PARK is a relocatable, portable parking booth which will migrate to numerous sites around Chicago over a one year period, from April 2000 to April 2001. By 'parking' at these sites, the booth implicates the land it sits on. It implies that you may park. It implies that you should pay. It implies surveillance, that your car is being monitored, that it will be safe. And it implies ownership of space. PARK points to space as retail value, where value is driven by proximity. Proximity to freeway interchanges, malls, restaurants, schools, businesses etc. Parking itself is a billion dollar a year 'interim' industry, built on what is most often a temporary use of land. Owners are speculators. They wait for the land to 'ripen', and in the meantime use it for parking until the property can be bought by a developer and taken to a 'higher and better use'. What does it mean to place the booth in a neglected lot vs. a lot already occupied by another booth vs. a lot currently used for cars but where parking is normally free? The fact that PARK is open to the public implies that whoever enters the booth could become the 'keeper' of the space, the one who accepts payment, who assumes responsibility. PARK is a structure in the service of transportation that suspiciously migrates. It seems appropriate that booths, as architecture, are not unlike cars, as architecture. Both juxtapose the enclosed sense of a private, personalized structure with the contrary fact of being surrounded by windows, leaving the person on permanent display. The role of 'parking attendant' forces conflicting, simultaneous states of vulnerability and security. He/she is both surveyor and surveyed.

Parking booth structures are innocuous but pervasive. I find in that a strange dignity. PARK celebrates the stubbornness of tiny, single-person architecture amidst the skyscrapers.

### NAVIGATION

PARK will be permanently open to the public. It's location will be tracked on a wall map outside Temporary Services, 202 S. State Street, Suite 1124, and at the Temporary Services web site: [http://www.megsinet.net/~nobudget/temp\\_serv.html](http://www.megsinet.net/~nobudget/temp_serv.html)

At the back of this guide is a **LOCATIONAL INVENTORY** of all the single-story asphalt parking lots around downtown Chicago which use attendant booths. Parking lots are indexed by management company. Lots can be either owned and operated, leased or managed. Larger companies such as AllRight/CPS and General/InterParking usually do all three. Smaller companies tend to be owner-operators. The photographs included in this guide are indexed in the back. For your convenience, booth **ASSEMBLY INSTRUCTIONS** have also been included

### PERTINENT WEB LINKS

Par-Kut: [www.parkut.com](http://www.parkut.com)

Porta King: [www.portaking.com](http://www.portaking.com)

*Thanks to: Brett Bloom, Melinda Fries, Kenneth Morrison, Paul Theriault, Joe Nicita, Mike O'Connell, J Cookson, Julie Pomerleau, Brian Rullman, Andrew and Tim*



# ASSEMBLY INSTRUCTIONS

## SUPPLIES

### steel

- 2x2 angle iron - (4) 7'2"
- (2) 3'2"
- (2) 4'2"
- 1x1 angle iron - (1) 7'2"
- (2) 7'
- (2) 3'2"
- (2) 4'
- (2) 25'
- (4) 23'

+ miscellaneous steel sizes for sliding door track

### wood

- (2) sheets exterior grade 1/2" plywood
- (2) boards of 2x4

*plexi* (2) 4' x 3'2" & (2) 3' x 3'2"

(2) 2 metal wheels

clear silicone caulk

liquid nails

WD-40

clear coat polyurethane spray

## ASSEMBLY

### Basic Steel Structure

Weld together 2 rectangular troughs from the 2" angle iron, each at 3'2" x 4'2". These are the base and roof of the booth.

Next connect the roof and base by welding in the 4 vertical lengths of 7'2" angle iron. Weld these verticals on the inside corners of the roof & base.

Now construct the cross bars that will separate the wood and the plexi. Between 2 of the verticals, at 4' up, lay in two pieces of the 1" angle iron. Lay them in side by side so they form a 'T' with its leg facing towards the inside of the booth and clamp them together. Weld in the cross bar. Repeat the same for 2 other sides of the booth, leaving one of the 4'2" sides open. (This will be the doorway side)

Next weld the 7'2" 1" angle iron lengthwise down the doorway side. This will form the division between solid wall and the sliding door.

### Sliding Door

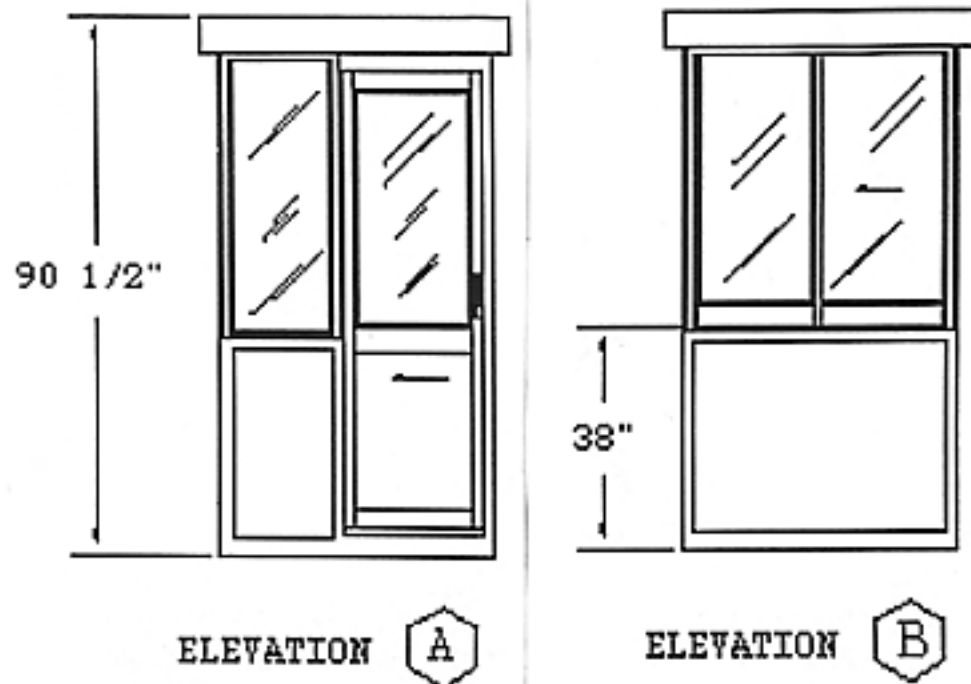
This door will slide across the front side of the booth, from left to right, on an inner track. 1st weld the door itself out of the 1" angle iron so that it is a 7' x 25" rectangle. Next weld a J shaped 'hooked' bar out of angle iron along the top side of the door and attach 2 wheels.

# LOCATIONAL INDEX

- photo 2 AllRight Parking/CPS Parking 312 578 1660  
SU corner, Illinois & Clark  
SW corner, Lake & Clinton  
N side Fulton, b/w Braun Bottles & Metra tracks
- photo 7 NU corner, Canal & Fulton  
NE corner, Jefferson & Kinzie  
SW corner, Canal & Fulton
- photo 10 SE corner, Lake & Jefferson  
SE corner, Van Buren & Franklin  
W side Clinton, just S of Kinzie  
S side Clark & Polk
- photo 21 SE corner, Polk & Financial  
E side Wells, b/w Polk & Harrison  
NE corner, Balbo & Wabash  
NE corner, Balbo & State  
NE corner, Harrison & State  
NE corner, Wabash & 9th  
E side Wabash, b/w 9th & 10th  
SW corner, 13th & Michigan  
SE corner, State & Plymouth  
N side 8th, b/w Wabash & State
- Ameritech Building  
SE corner, Randolph & Franklin
- Amtrack  
SE corner, Jackson & Clinton
- Chicago Police Department  
SE corner, Madison & Laflin  
NE corner, State & Roosevelt
- General Parking/InterParking 312 341 0011  
SU corner, Randolph & Franklin  
S side Franklin, b/w Randolph & Lake  
SW corner, Kinzie & Canal  
S side Van Buren b/w Franklin & Wacker  
Van Buren & Canal, by old post office  
SU corner, Van Buren & Sangamon  
W side Wabash b/w Adams & Monroe
- Hunter Parking, Inc.  
N side Harrison, b/w Wells & Financial Plaza  
NE corner, Harrison & Financial Plaza
- Loop Auto Parks  
524 S. Wabash, b/w Harrison & Congress
- photo 1 Malcom X College  
N side Jackson b/w Damen & Ogden
- photo 19 Mid City Parking 312 664 1400  
under Congress b/w Jefferson & DesPlaines  
NW corner, Clark & Polk
- photo 11 Miller Parking 312 372 1339  
NW corner, Lake & Jefferson  
115 N. Jefferson, b/w Randolph & Washington  
NW corner, Green & Jackson
- P.N. Parking  
SE corner, DesPlaines & Monroe
- Peoples Auto Parking 312 648 9770  
SE corner, Monroe & Jefferson



photo 23



one to either side of this piece. On the wall of the booth, weld a track for the wheels to slide across. Once the door is hung, weld in the 'T' shaped cross bars to match the height of the other cross bars.

#### Roof

The roof is a removable wooden cap that rests on top of the steel frame.

Cut 4 lengths of 2x4s to fit on the outside of the steel structure and screw them together. Cap with a piece of exterior grade plywood cut to size.

#### Booth Side Panels

Cut 5 panels from the exterior grade plywood to fit into the sliding door, and the 4 sides of the booth. Glue them in place from the inside using liquid nails or similar adhesive. Clamp and set to dry.

#### Window Panels

Using clear silicone caulk, glue the plexi inside the sliding door and the 4 sides of the booth. Clamp and set to dry.

Paint or treat the steel with clear coat anti-rust spray. Prime all the wood, walls and roof, with oil based primer, then paint with an oil based enamel. Use the WD-40 to oil the track that the door slides on.



photo 1



photo 22



photo 21



photo 2





photo 3



photo 20



photo 19



photo 4



photo 5



photo 18



photo 17



photo 18



photo 7



photo 1b





photo 15



photo 8



photo 9



photo 14



photo 13



photo 10



photo 11



photo 12